

Approximate total area⁽¹⁾
1320.26 ft²
122.66 m²

(1) Excluding balconies and terraces.

While every attempt has been made to ensure accuracy, all measurements are approximate, not to scale. This floor plan is for illustrative purposes only.

GIRAFFE 360

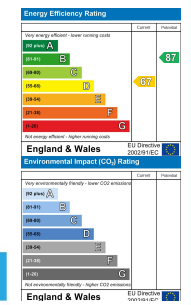


53 Parc Tyisha, Burry Port, Carmarthenshire, SA16 0RR

- Traditional Detached Bungalow
- Spacious Lounge into Dining Area & Conservatory
- South-facing Rear Garden
- Two Double Bedrooms
- Outbuilding Offering Extra Living Space
- Detached Garage with Driveway & Separate Driveway
- Popular Residential Estate
- EPC RATING D. COUNCIL TAX BAND E.
- Coastal Town

Price £319,950

COMPUTER-LINKED OFFICES THROUGHOUT WEST WALES and Associated office in Mayfair, London



We would respectfully ask you to call our office before you view this property internally or externally.

VIEWING: By appointment only via the Agents.
TENURE: We are advised Freehold
SERVICES: Mains water, electric, gas and sewerage. We have not checked or tested any of the services or appliances at the property.
TAX: Band 'E'

WHAT3WORDS://loafer.exposing.importing

*** BE SURE TO FOLLOW US ON FACEBOOK & INSTAGRAM ***

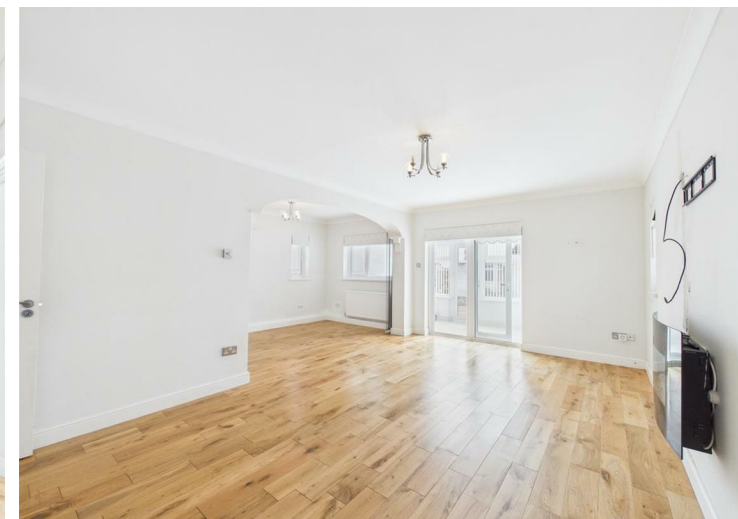
Take on AJS/SC/0526/OK

WE WOULD LIKE TO POINT OUT THAT OUR PHOTOGRAPHS ARE TAKEN WITH A DIGITAL CAMERA WITH A WIDE ANGLE LENS. These particulars have been prepared in all good faith to give a fair overall view of the property. If there is any point which is of specific importance to you, please check with us first, particularly if travelling some distance to view the property. We would like to point out that the following items are excluded from the sale of the property: Fitted carpets, curtains and blinds, curtain rods and poles, light fittings, sheds, greenhouses - unless specifically specified in the sales particulars. Nothing in these particulars shall be deemed to be a statement that the property is in good structural condition or otherwise. Services, appliances and equipment referred to in the sales details have not been tested, and no warranty can therefore be given. Purchasers should satisfy themselves on such matters prior to purchase. Any areas, measurements or distances are given as a guide only and are not precise. Room sizes should not be relied upon for carpets and furnishings.

Details are correct at the time of listing. We have not seen sight of all building regulations or planning permissions should they be necessary,

COMPUTER-LINKED OFFICES THROUGHOUT WEST WALES and Associated office in Mayfair, London

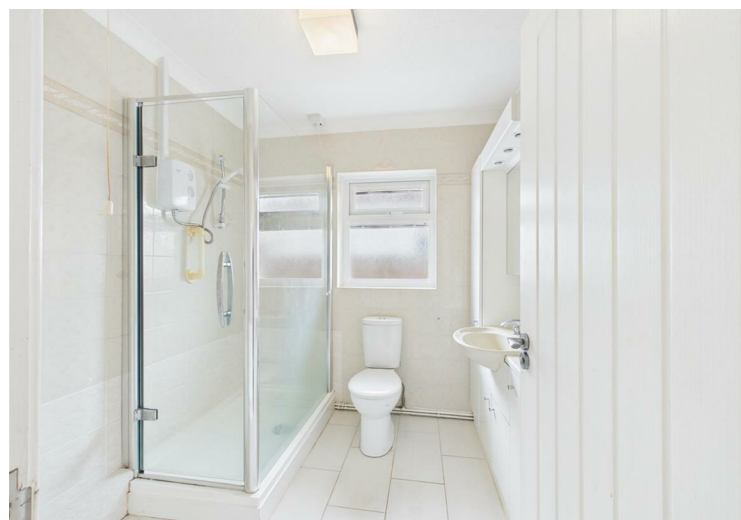




Are you looking for a BUNGALOW that's CHAIN-FREE with a south-facing rear garden and in a great location? Then rear on! Situated in the popular Parc Tyshia estate in Burry Port, surrounded by peace and quiet with the friendliest of neighbours we have for sale this vacant bungalow. This bungalow offers the next lucky purchaser a few bonuses, 1. A detached outbuilding which can be utilised as a home office, gym or even a second lounge. 2. A second driveway leading to a detached garage, 3. A conservatory that looks out onto the south-facing garden. Would you like to see what's behind the door of 53 Parc Tyshia? Call us today on 01554 759655 to arrange a viewing! EPC RATING D. COUNCIL TAX BAND E.

Accommodation comprises : Porch, hallway, spacious lounge with additional dining area, conservatory to enjoy the south-facing garden, kitchen, shower-room and two double bedrooms. Externally, open-aspect frontage laid with decorative chippings and driveway. To the rear, an enclosed south-facing low-maintenance garden laid to patio, potting PVCu shed, detached garage with a separate driveway and a spacious outbuilding that can be used for an array of things, from a home-office, gym or even a separate sitting room.

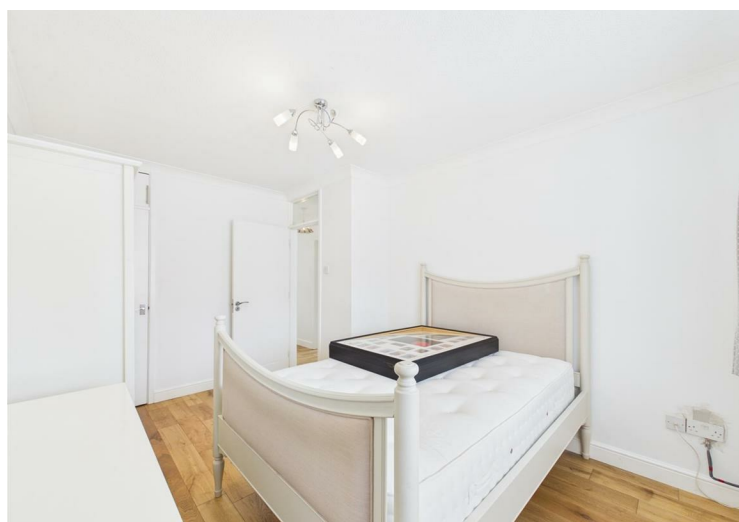
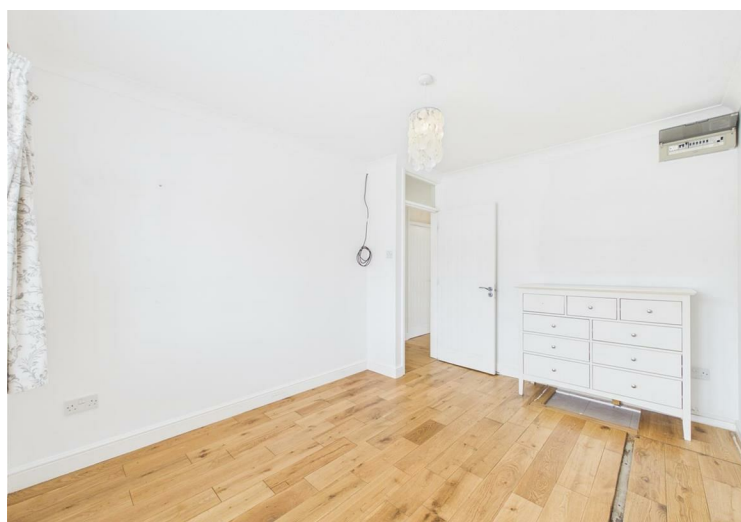
Burry Port is a small harbour town on the outskirts of Llanelli that offers all local amenities and good transport links. Burry Port is well-known to people where Amelia Earhart landed as the first woman to fly across the Atlantic Ocean. The Pembrey Burrows sand dune and wetland system, home to a country park and the Cefn Sidan sands, lie nearby. In recent years the harbour has been redeveloped and offers a view of the stunning Gower Coastline opposite.



..AGENTS VIEWING NOTES

- PORCH**
- HALLWAY**
- LOUNGE AREA**
- DINING ROOM AREA**
- CONSERVATORY**
- KITCHEN**
- STORAGE CUPBOARD**
- SHOWER ROOM**

- BEDROOM 1**
- BEDROOM 2**
- DETACHED GARAGE**
- OUTBUILDING:**
- STORAGE ROOM LEADING INTO**
- HOME OFFICE/GYM/SITTING ROOM**



DIRECTIONS

At our office head towards Station Road and at the traffic lights turn right. Stay in the left-hand lane and follow the road to another set of traffic lights which you go straight across. Follow the road until you get to Sandy Roundabout taking the third turning off for Sandy Road and follow the road through Pwll coming into Burry Port. At the roundabout take the second turning off and follow the road passing a petrol station on your left keep on the road and follow taking the first turning off on your left, signposted "Parc Tyshia", take the second turning off on your left and the property is situated on your right, number 53.

See our website www.westwalesproperties.co.uk in our TV channel to view our location videos about the area.